

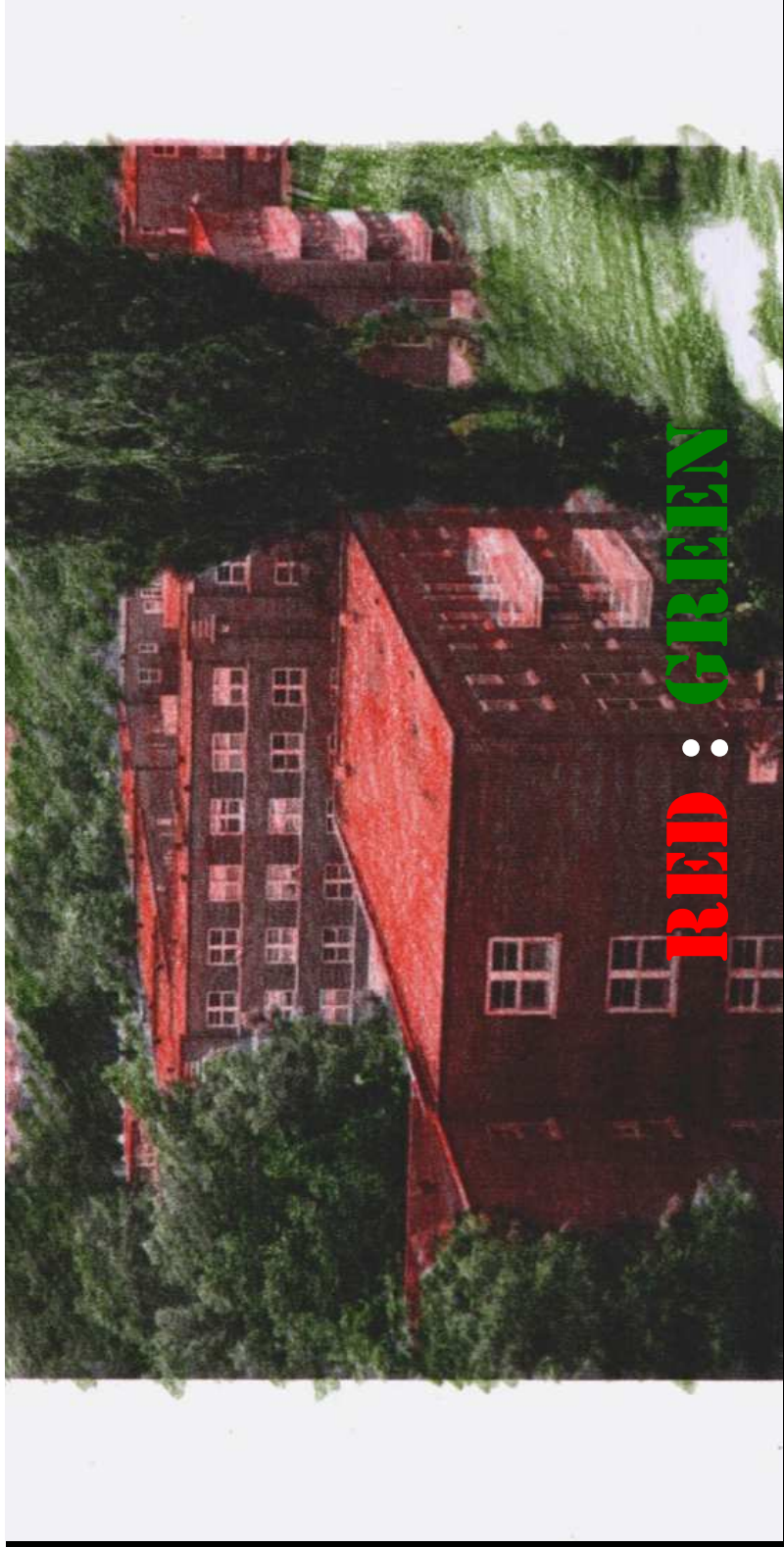


**ACCELERATING SUSTAINABILITY**  
Centre for Interactive Research on Sustainability  
International Conference November 3 - 5, 2011:  
**FROM REGENERATIVE BUILDINGS  
TO REGENERATIVE COMMUNITIES, »**

*Daniel Pearl, associate professor: School of Architecture, Université de Montréal,*

*Architect and Co-Founding partner of L'OEUF :*

*L'OFFICE DE L'ÉCLECTISME URBAIN ET FONCTIONNEL) OLIVIER PEARL PODDUBIUK ET ASSOCIÉS ARCH*



“The lack of representation of poor and working class people in our public forums is reflected in the wholesale erasure of their narratives from the city history (or its conversion to fictionalized nostalgia) and their neglect at the hands of public and private planners. Housing has to be rethought as a social resource, not simply as a series of opportunities for profit”

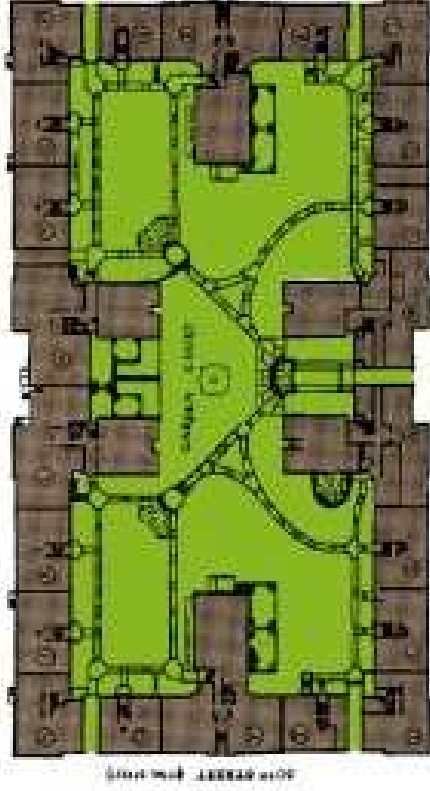
from *If You Lived Here* - *Fragments of a Metropolitan Viewpoint*, Martha Rosler (1992)

Benny Farm was built in 1947 to house veterans returning from World War Two, embodying the social ideals of the time.

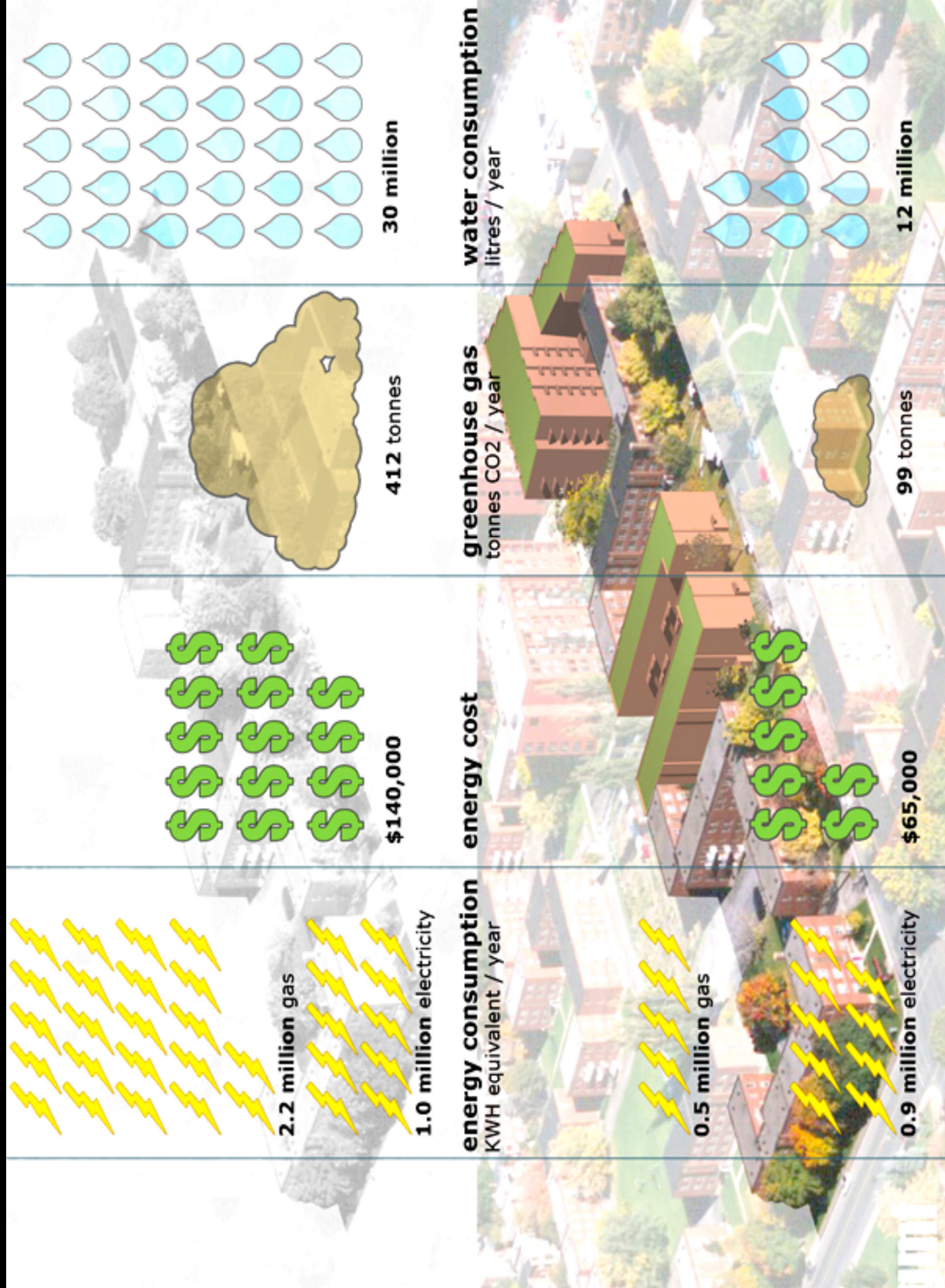


Comparison of Schemes

Scheme	Units	Characteristics
Scheme A	20	1 complete street - good service
Scheme B	20	4 private streets - fair service
Scheme C	20	11 alleys - 71% good to excellent service
Scheme D	20	24 alleys - 95% good to excellent service
Scheme E	100	8 alleys - 71% good to excellent service
Scheme F	100	8 alleys - 71% good to excellent service
Prop.	100	3 alleys - 71% good to excellent service



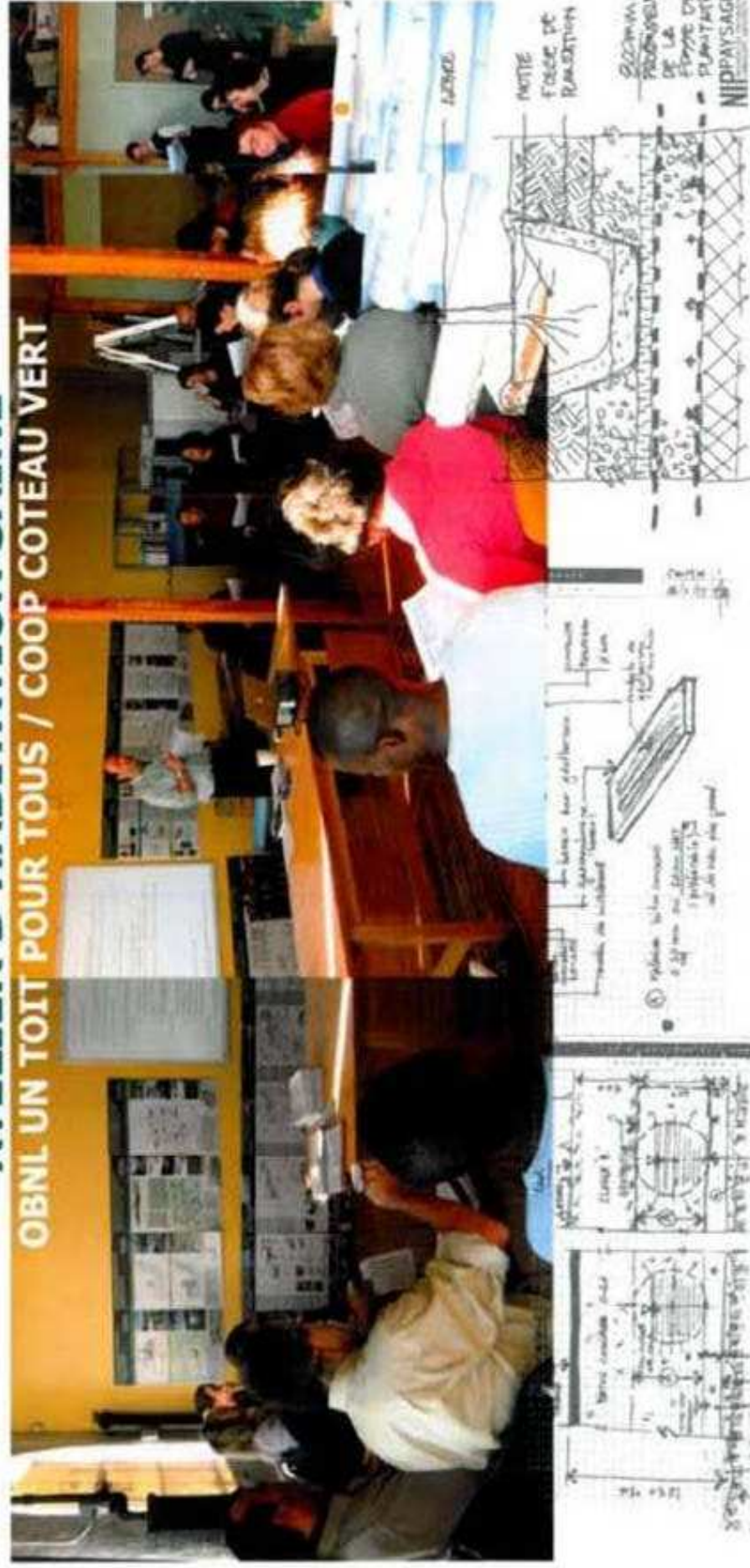
**Benny Farm and others:** embodying the *social ideals* of the time, really means – invoking LCA and Social LCA, where future generations do not have to inherit technical complications and imbalanced operational costs, **where complexity and resilience replace overspecialization**



**ARCHITECTS, LANDSCAPE ARCHITECTS, MECHANICAL, ELECTRICAL AND CIVIL ENGINEERS, ENERGY SIMULATION EXPERTS, CITY OF MONTREAL OFFICIALS (INCLUDING EXPERTS FROM WATER, WASTE, SOILS, CONSTRUCTION, URBAN DESIGN AND FINANCE), AGENCY FOR ENERGY EFFICIENCY, INVOLVEMENT FROM THE NET ZERO (EQUILIBRIUM) CMHC HOUSING INITIATIVE, GRT (TECHNICAL RESOURCE GROUP), OTHER LOCAL NON-PROFIT HOUSING DEVELOPERS, HYDRO QUEBEC, ENERGY EFFICIENCY FUND OF QUEBEC AND THE QUEBEC HOUSING AGENCY**

## **ATELIER D'HABITATION SAINNE**

**OBNL UN TOIT POUR TOUS / COOP COTEAU VERT**



**IDP : INTEGRATED DESIGN PROCESS / A CHALETTE FOR A PILOT PROJECT INITIATIVE**

**HEALTH ENERGY RESOURCE ENVIRONMENT AFFORDABILITY**

**PILOT PROJECTS:  
ATTEMPTING TO NEGOTIATE AN EQUILIBRIUM BETWEEN A MINIMIZED  
ECOLOGICAL FOOTPRINT AND THE MAXIMUM CARRYING CAPACITY**



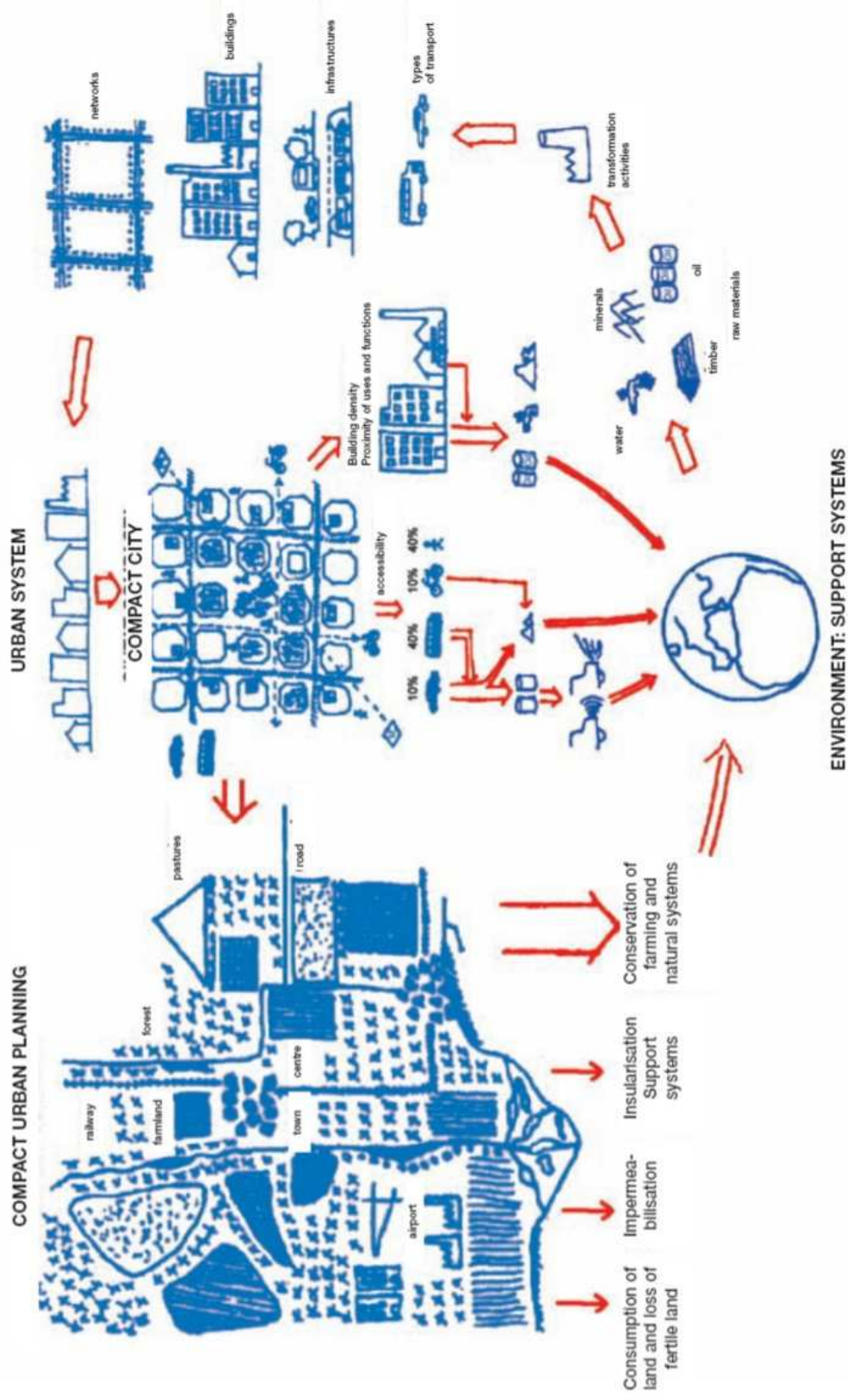
# THE UEAB ECO-SYSTEMIC MODEL (director Salvador Rueda) METABOLISM OF URBAN ORGANISATION BASED ON 4 PRINCIPLES

COMPACTNESS

COMPLEXITY

EFFICIENCY

STABILITY

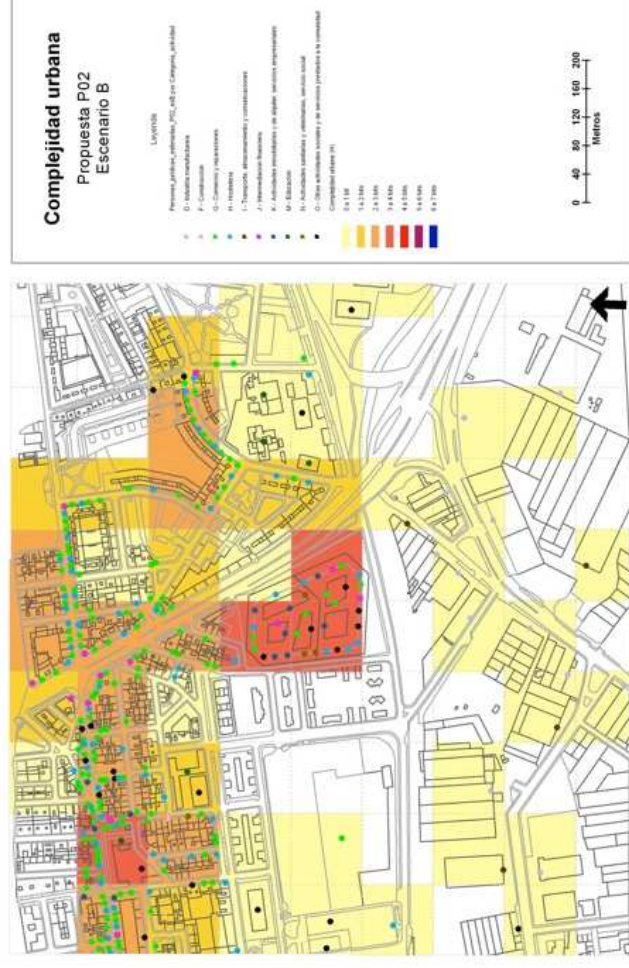
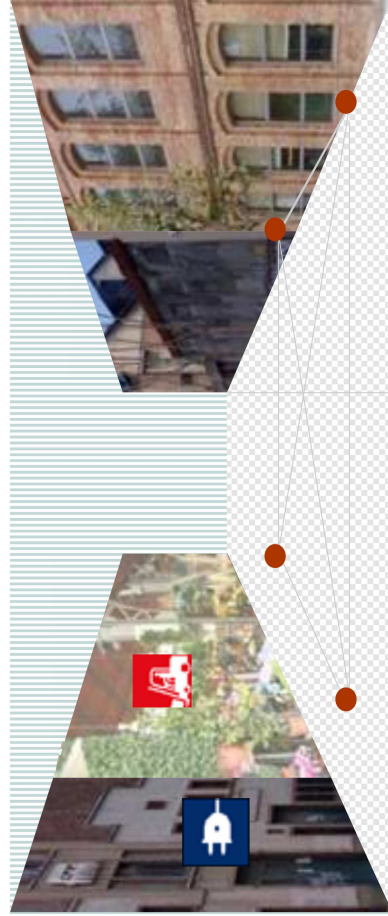
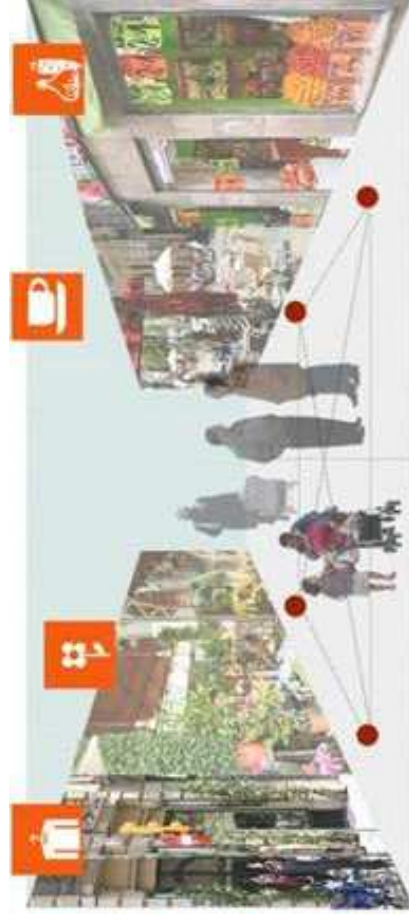


# COMPLEXITY (H)

## Complexity (H)

Is about the organisation of the city and the interaction between people and activities in public space. It include:

1. Diversity of economical and social activities
2. Diversity of people
3. Proximity between people and activities



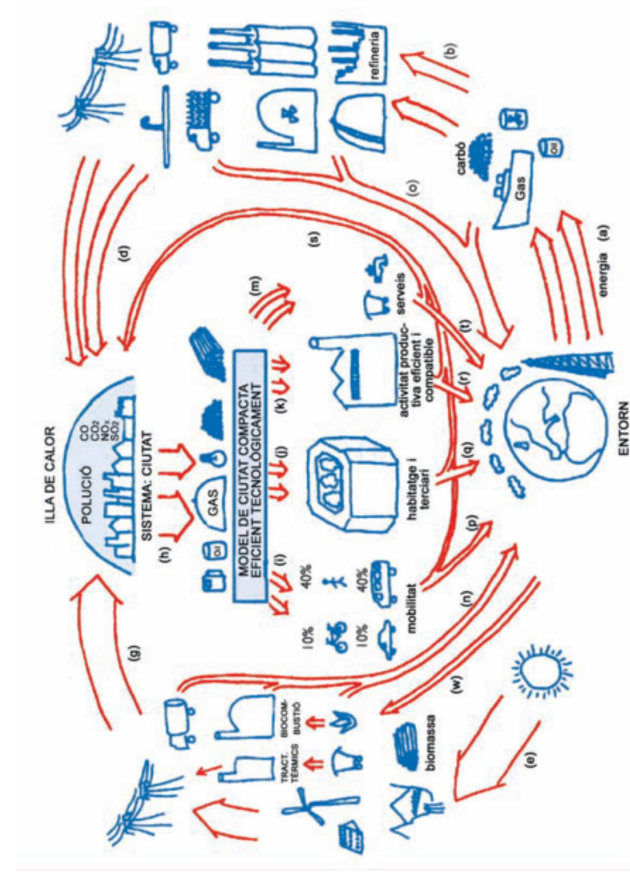
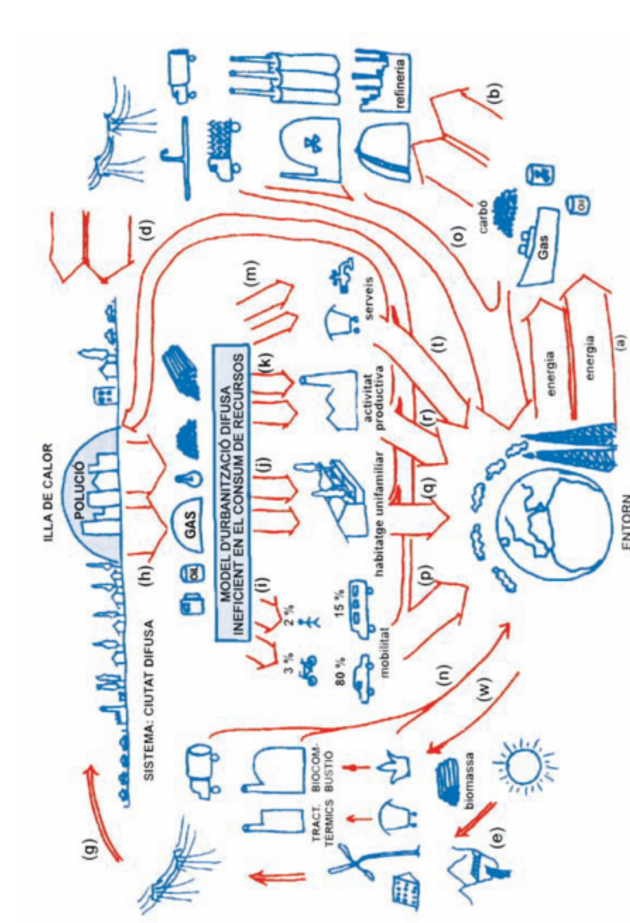
Caso de estudio: Gijón  
Propuesta 02



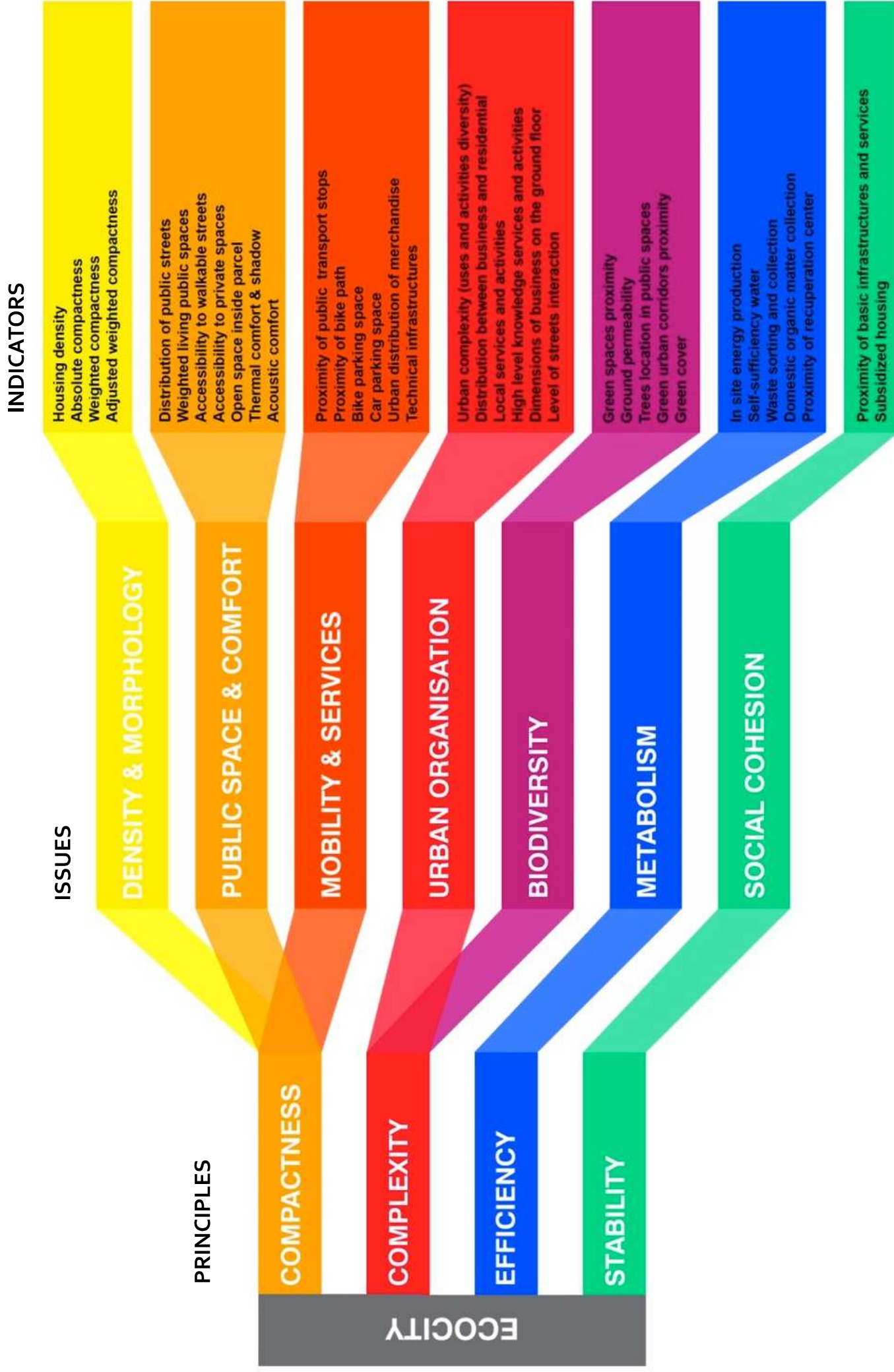
## Metabolism / Efficiency

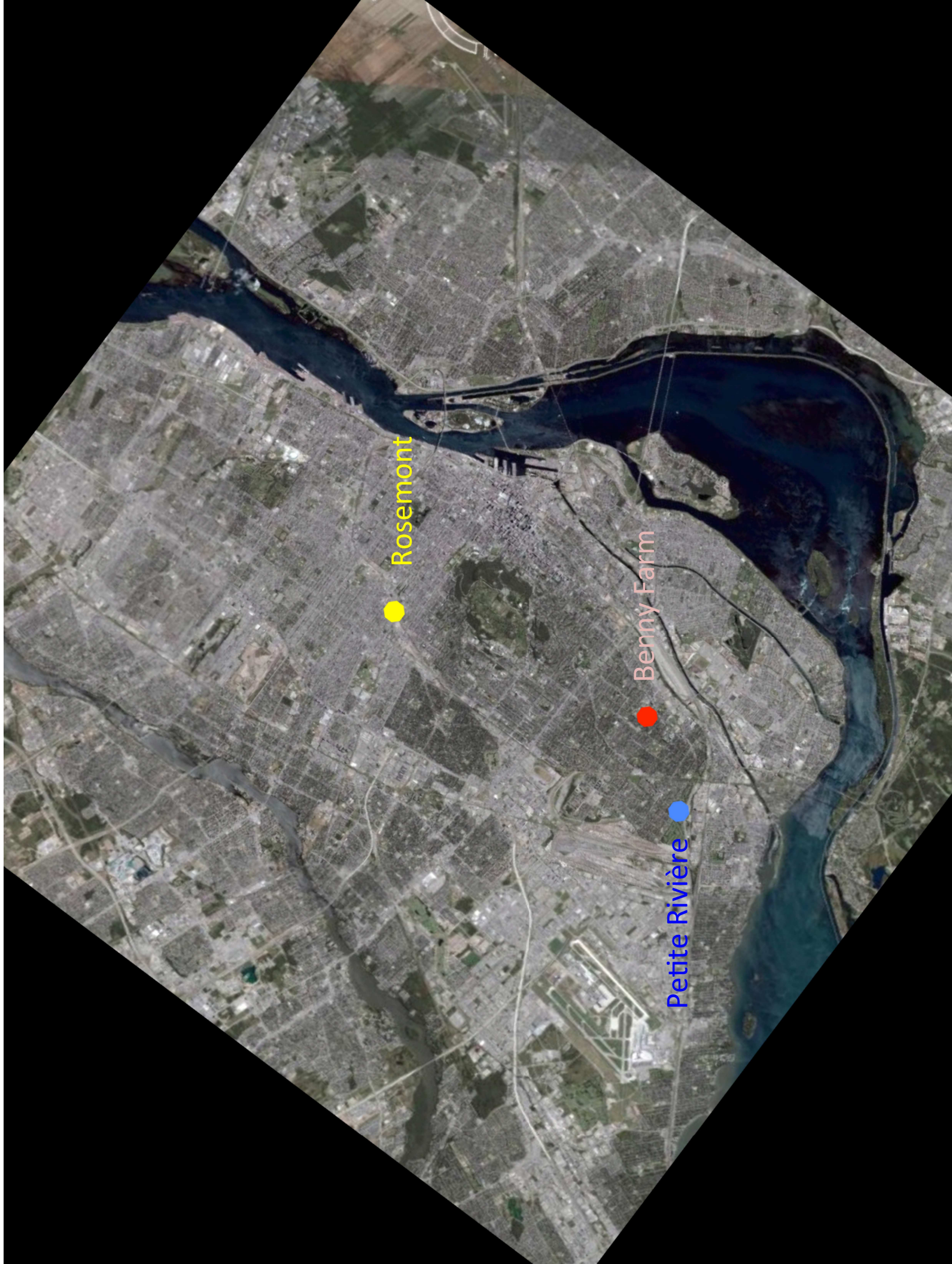
Is about system of basic needs of cities : water, energy, waste and natural resources. It include:

1. Low consumption and alternative energy system
2. Low impact management of water system
3. Waste segregation
4. Composting of organic waste
5. Minimum impact on all natural resources



# THE UEAB METHODOLOGY



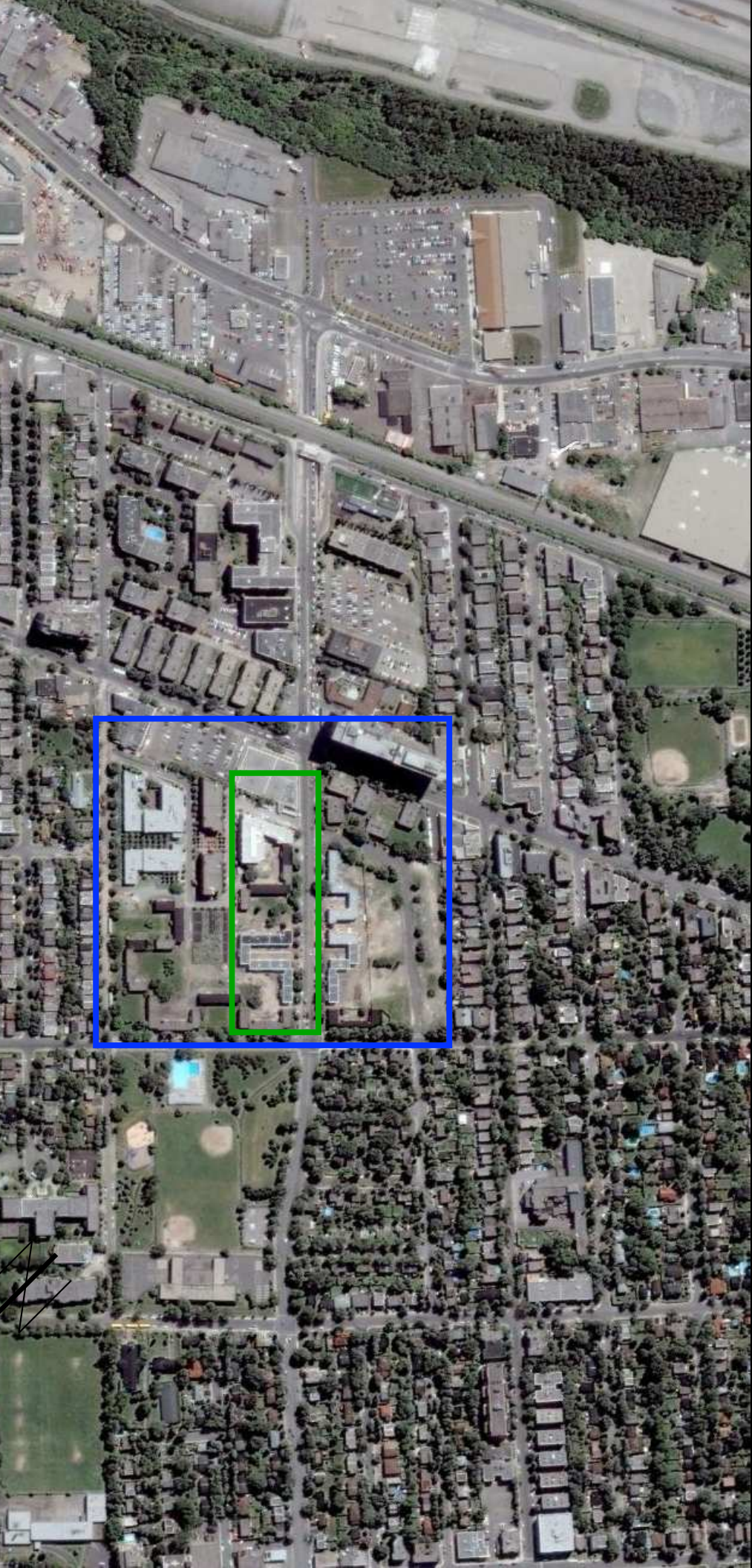


Rosemont

Benny Farm

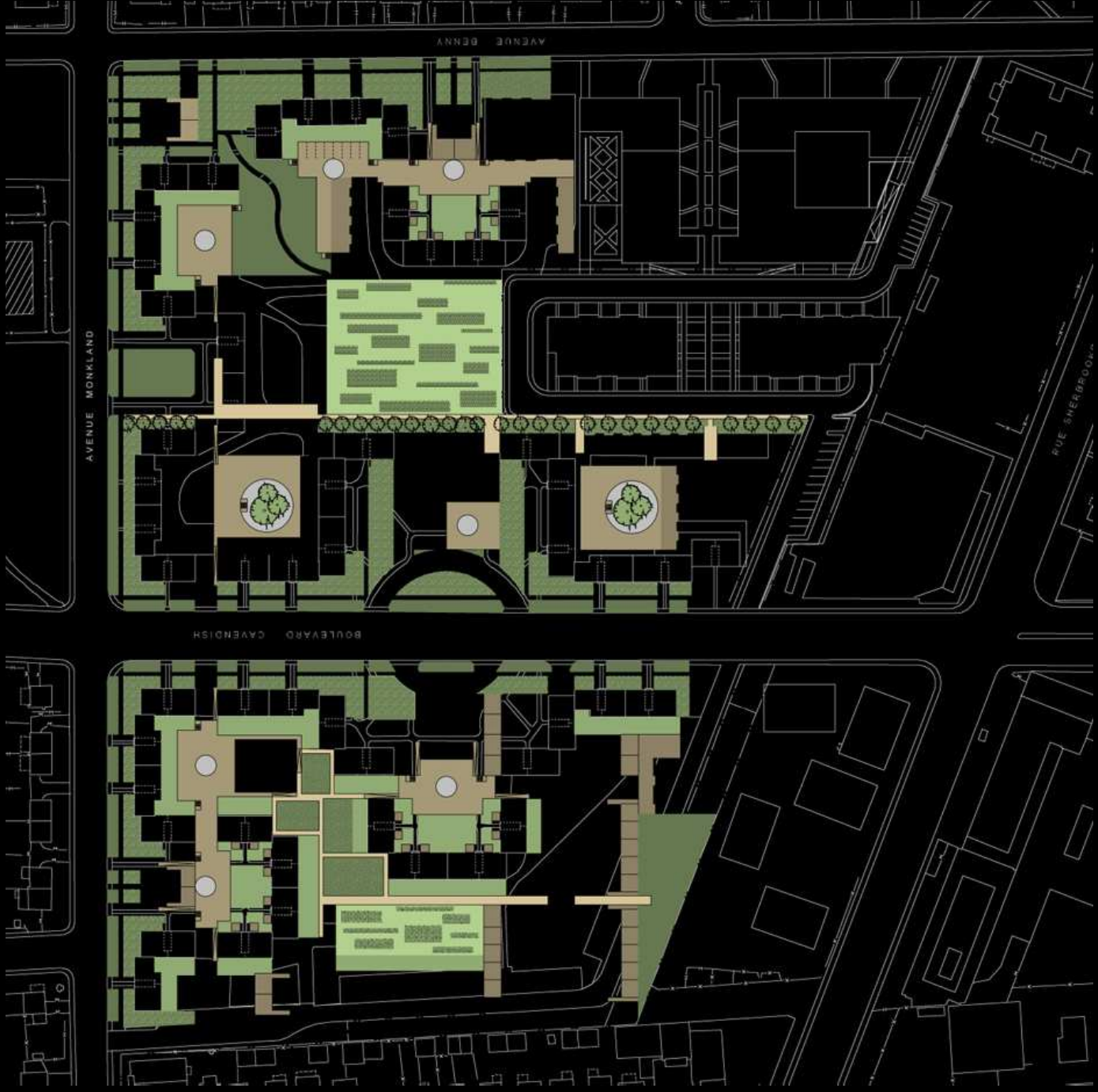
Petite Rivière

# RECONCILING SUSTAINABILITY AND CONSERVATION: REVISITING THE “SOCIO-CULTURAL, SOCIO-ECONOMIC AND THE ECOLOGICAL” –AT TWO VASTLY DIFFERENT SCALES



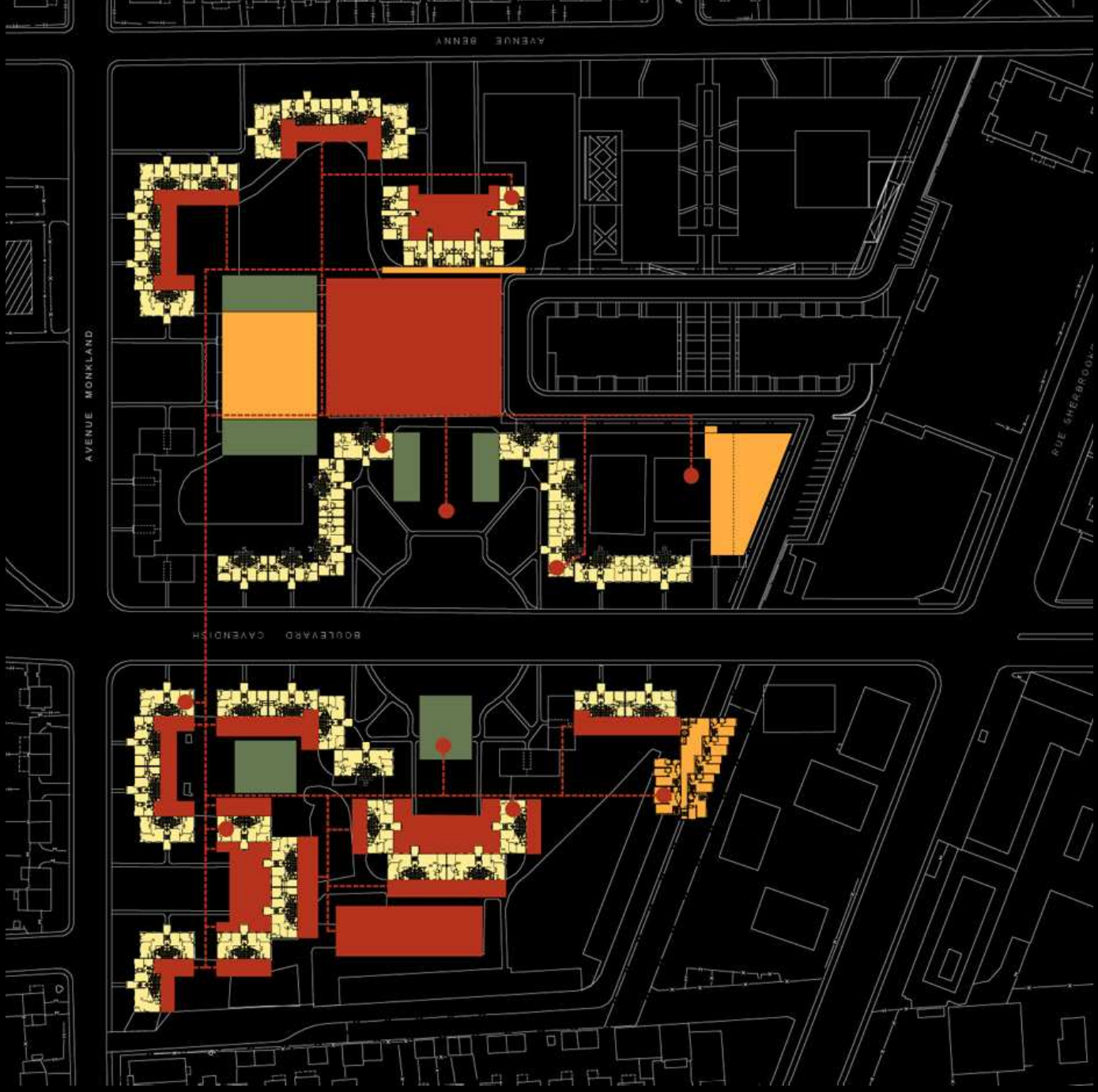
642, rue de Courcelle, bureau 402  
Montréal (Québec) H4C 3C5

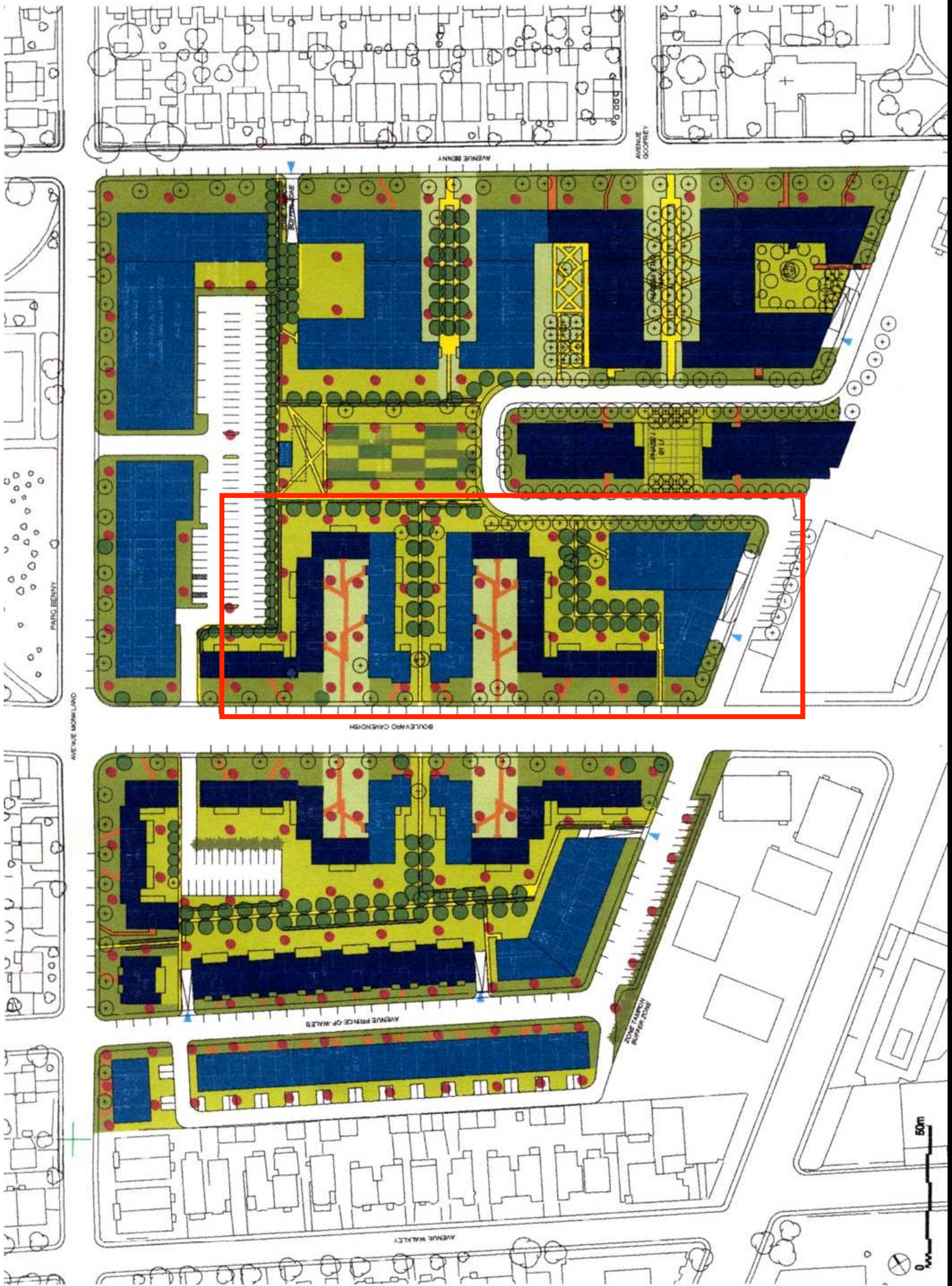
OLIVIER PEARL PODOBIUK  
ET ASSOCIÉS ARCHITECTES S.É.N.C.



**LANDSCAPE  
AMENAGEMENT EXTERIEUR**

*Proposal by L'OEUF in collaboration with NIP paysage & Community Land Trust Benny Farm*





Masterplan by Saia Barbarese Topouzanov architectes

# IDP (Integrated Design Process)

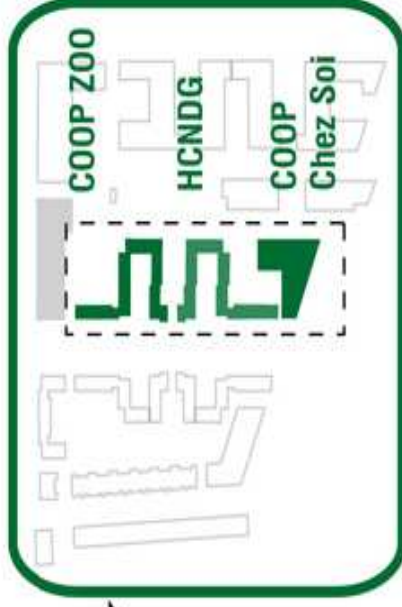
# Partnerships

Groupe de Travail de Benny Farm  
Communit Consultants  
Community Members

**GEBF**  
Political Partnership

**VDM**  
City of Montreal  
Green municipal fund  
**CLC**  
Canada Lands Corporation  
**CMHC**  
Canada Mortgage and  
Housing Corporation

L'OEUF Architects



Green Energy Benny Farm  
clients & users

**GEBF**  
Community  
Partnership

**GEBF**  
Consultants

L'OEUF Architects

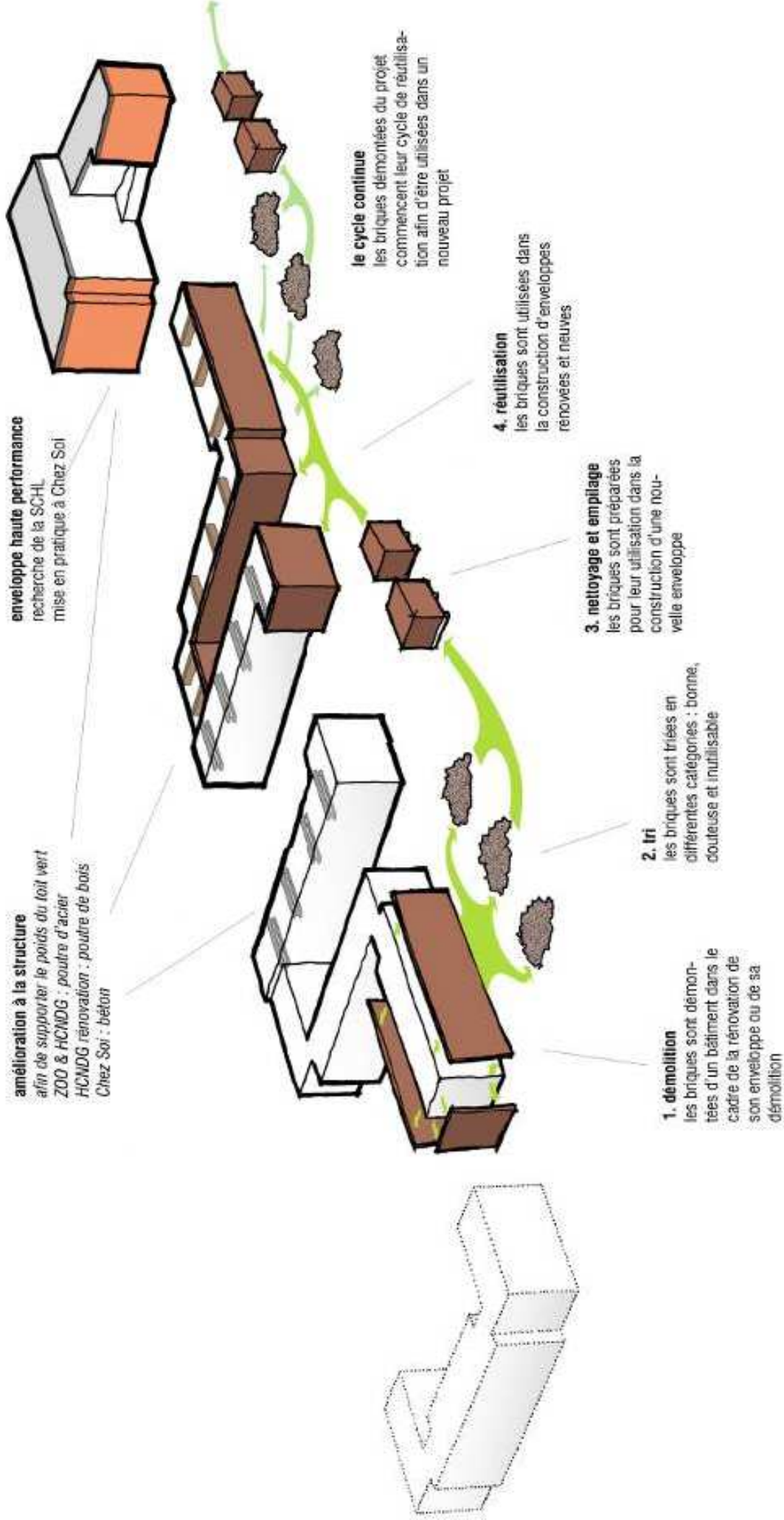
Saia Barbarese Topuzanov Master Plan  
MRA Martin Roy Assoc. mechanical  
CDH Conseil en Développement de l'Habitation  
Économique et Communautaire  
CDEC Corporation de Développement







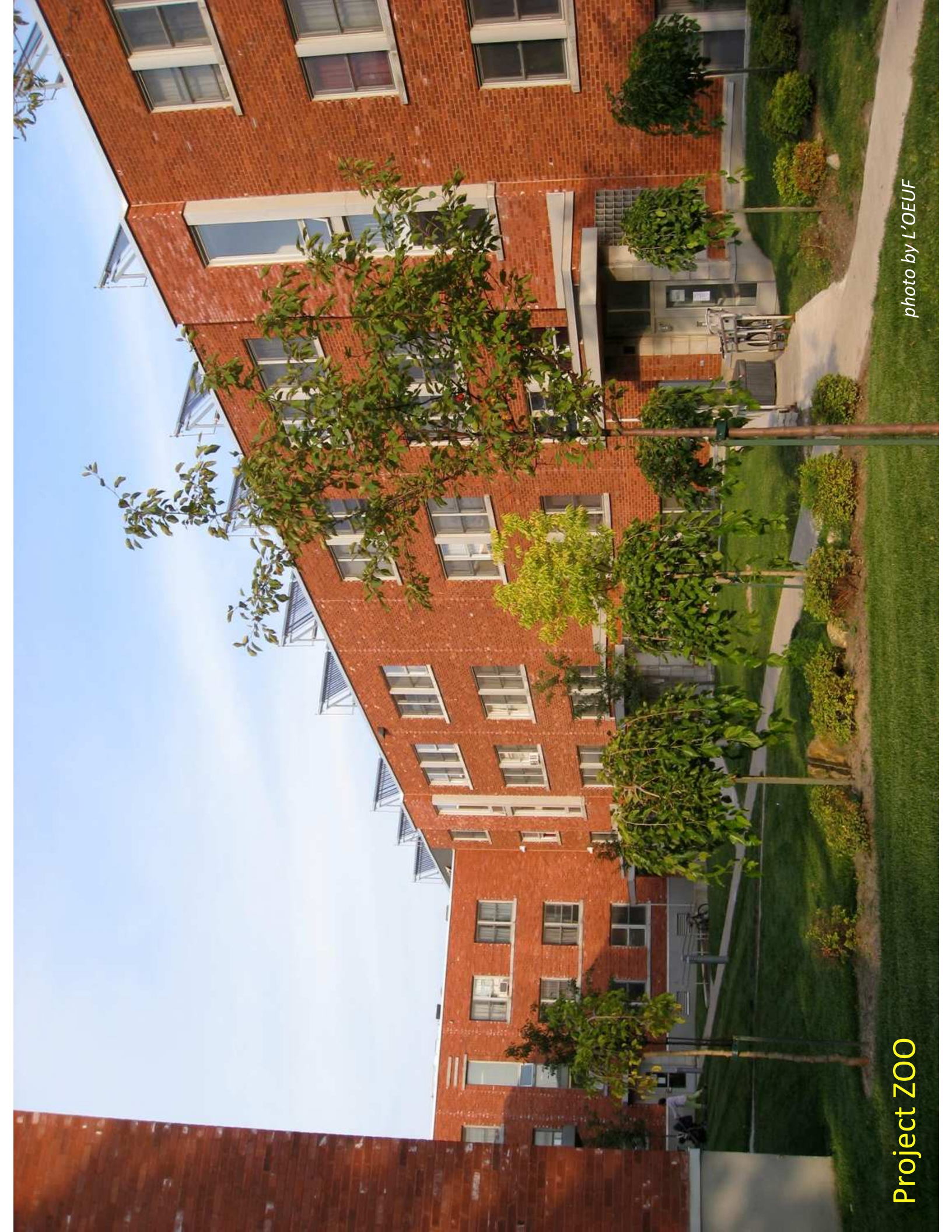
# Process for Dismantling, Cleaning and Re-using the Original Masonry





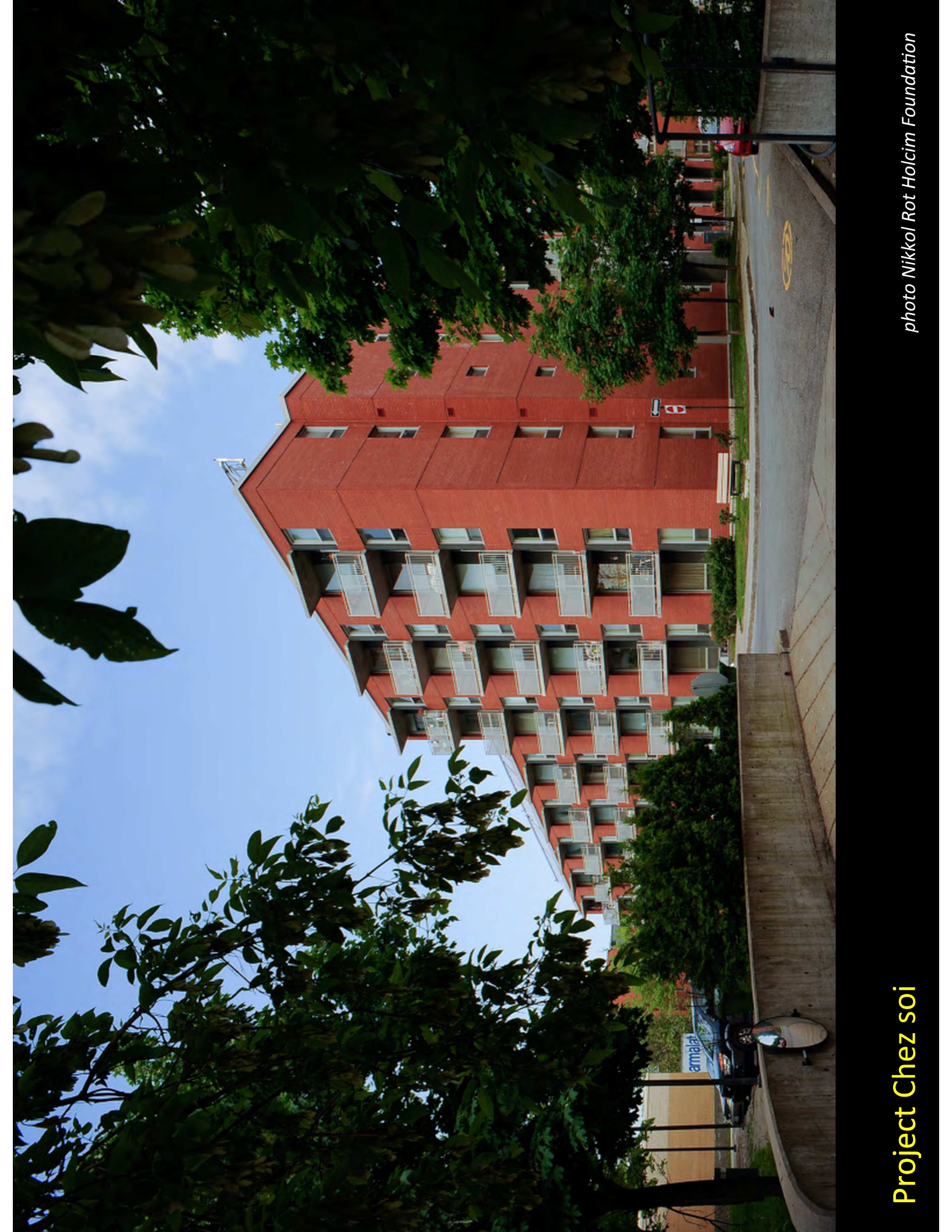


Projet ZOO



Project ZOO

photo by L'OEUF



**Project Chez soi**

*photo Nikkol Rot Holcim Foundation*